

# ***On Air Clock***

## Operating Manual

Rev. 1.0





## 1 TABLE OF CONTENTS

1 TABLE OF CONTENTS.....	3
2 INTRODUCTION.....	4
3 INSTALLATION GUIDE.....	5
4 RUNNING THE SOFTWARE.....	9
5 PROGRAM SETUP.....	11
6 WARRANTY.....	15

## **2 INTRODUCTION**

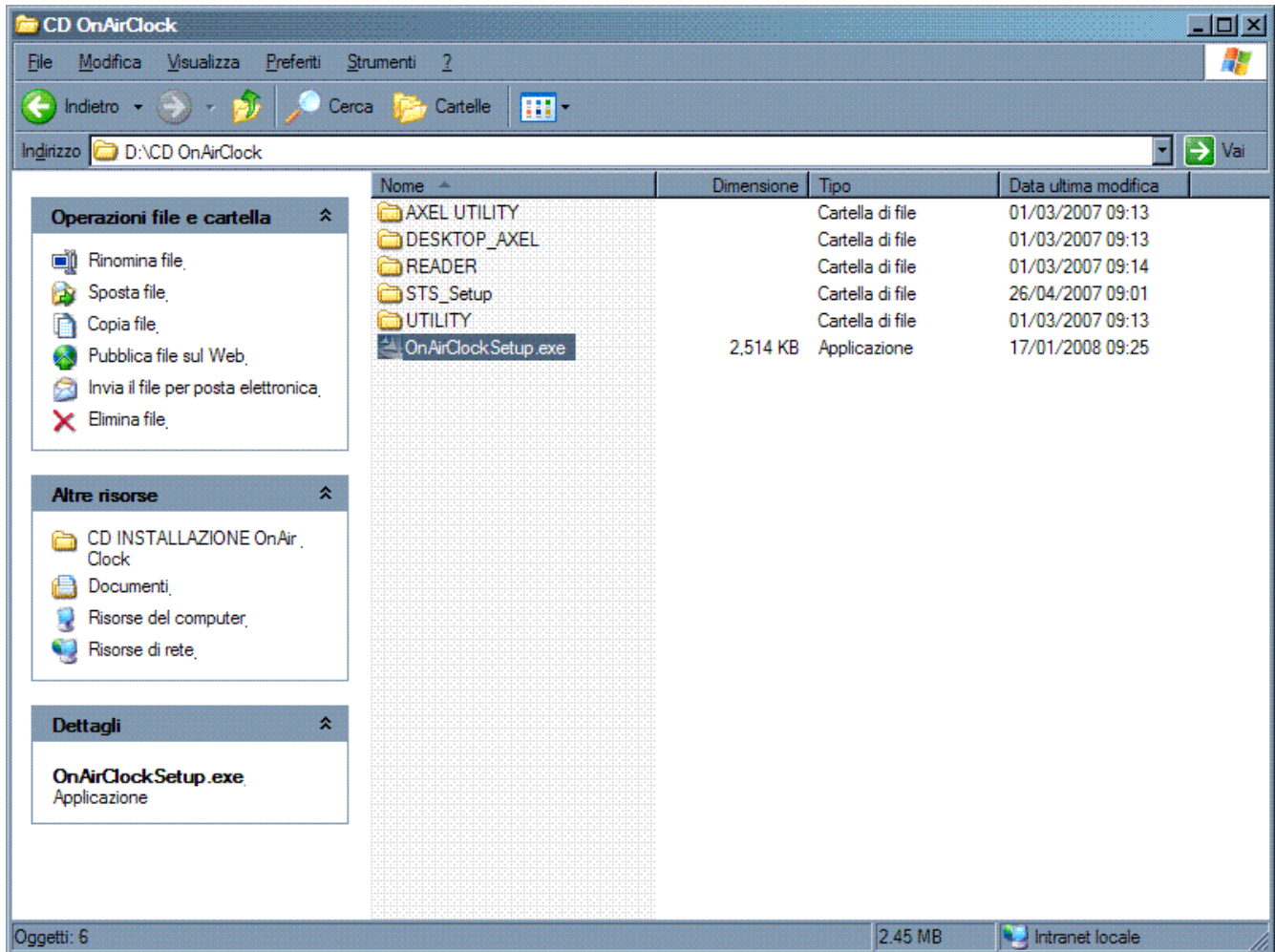
OnAir Clock is the easiest way to monitor time.

With OnAir Clock you can manage up to three different clocks useful to go OnAir: Local Time, Count Up Clock and Count Down Clock.

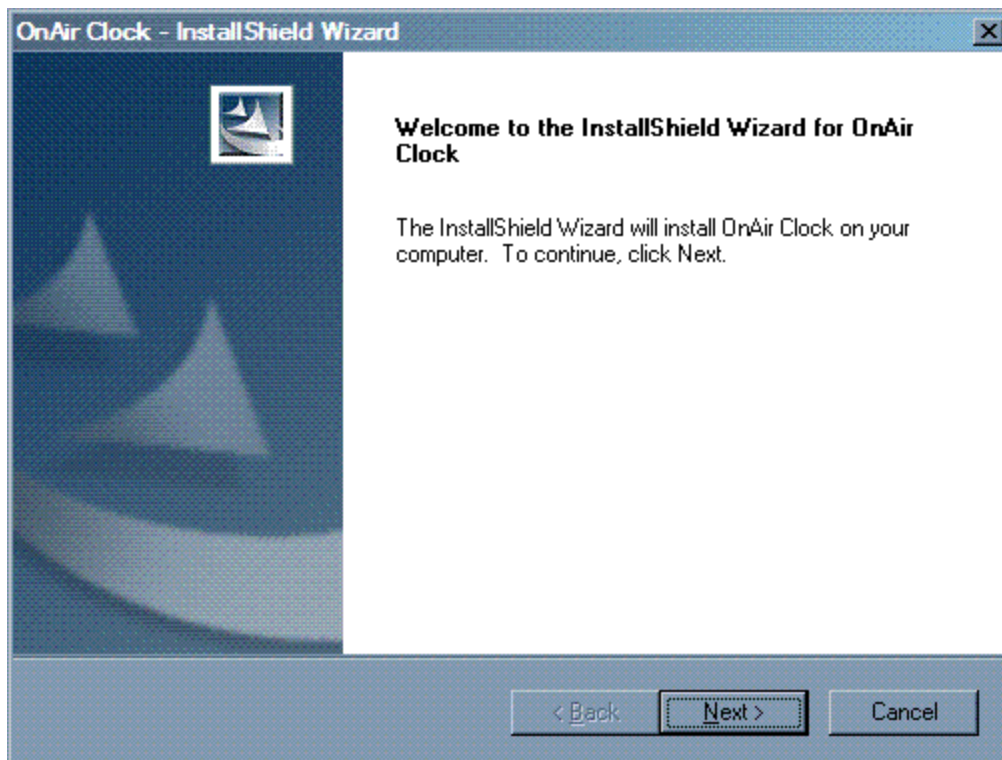
### 3 INSTALLATION GUIDE

Installing OnAir Clock is very easy, just follow the standard Windows Installation Steps:

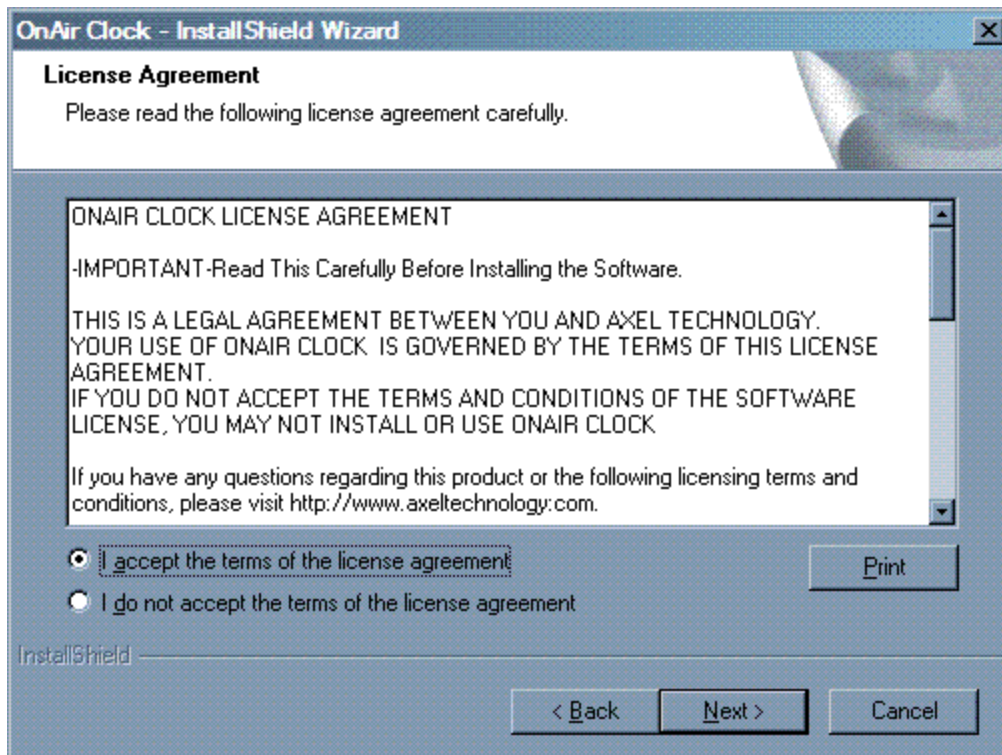
Double Click on the “OnAirClockSetup.exe” icon



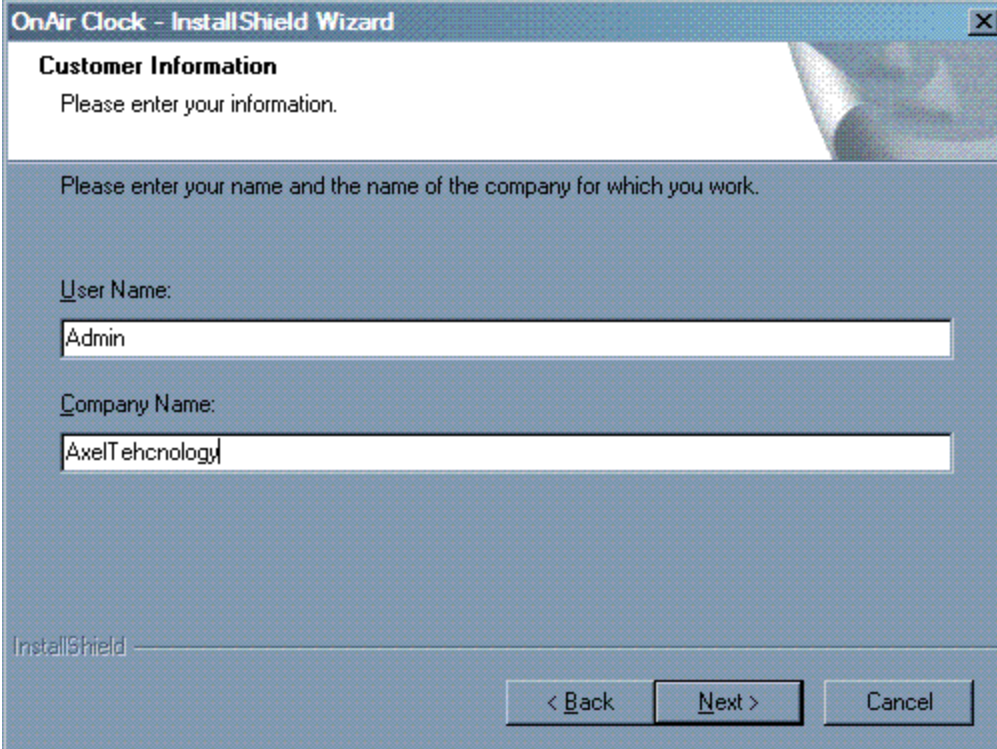
An Install Shield Prompt will appear, click on “Next” button



Select “I accept the terms of the license agreement” and click on “Next” button

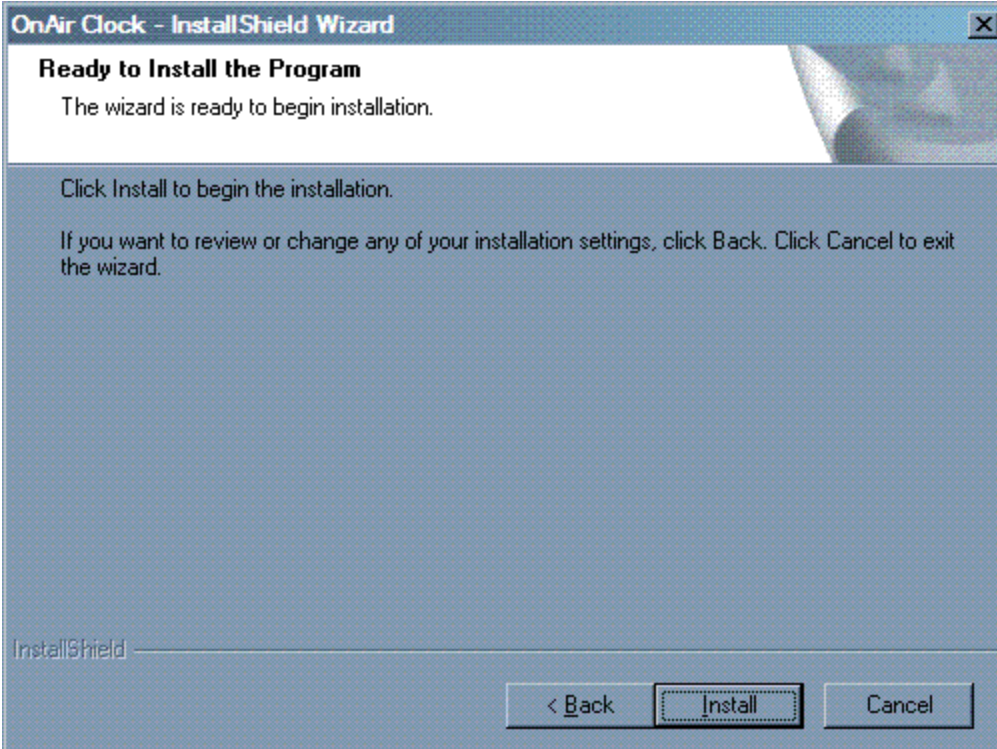


Fill in User and Company Name and click on “Next” button



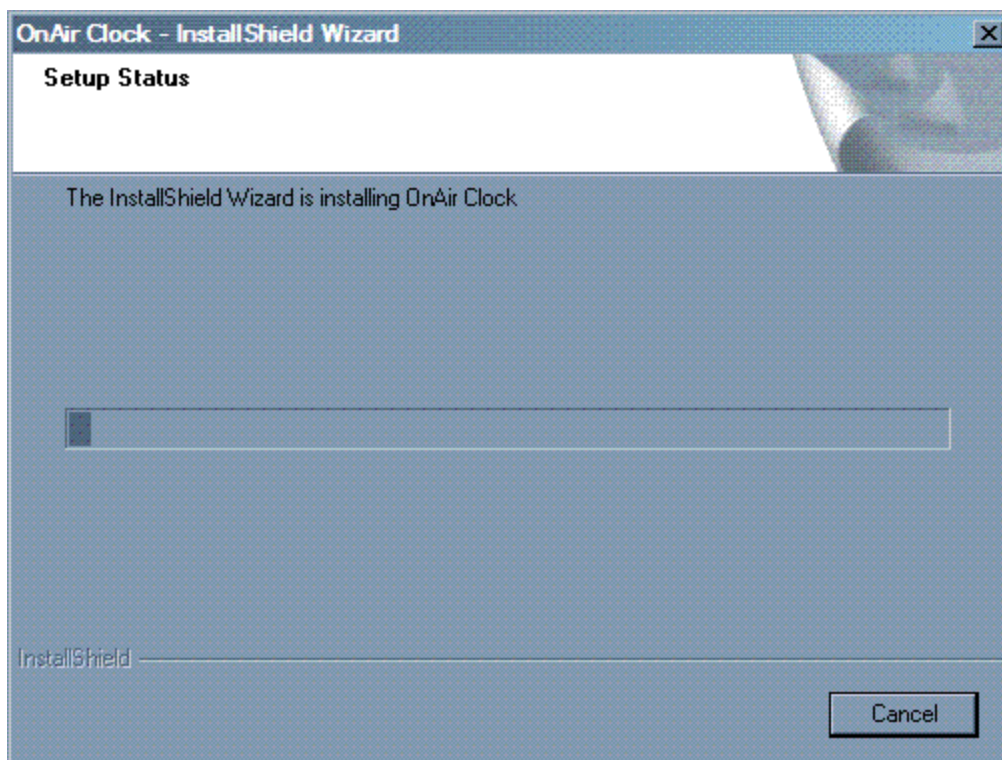
The screenshot shows the 'OnAir Clock - InstallShield Wizard' window. The title bar includes the text 'OnAir Clock - InstallShield Wizard' and a close button. The window has a header section with the title 'Customer Information' and the instruction 'Please enter your information.' Below this, a larger text area says 'Please enter your name and the name of the company for which you work.' There are two input fields: 'User Name:' with the text 'Admin' and 'Company Name:' with the text 'AxelTehcnology'. At the bottom left, the 'InstallShield' logo is visible. At the bottom right, there are three buttons: '< Back', 'Next >', and 'Cancel'.

Click on “Install” button to start installing the program

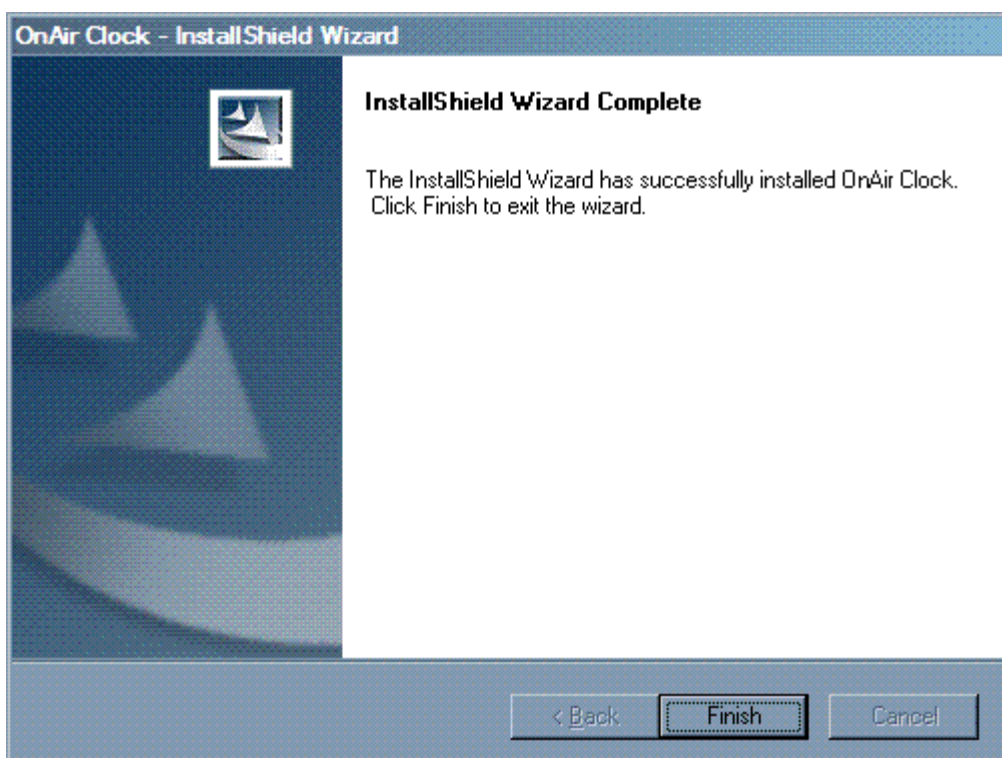


The screenshot shows the 'OnAir Clock - InstallShield Wizard' window at the 'Ready to Install the Program' step. The title bar includes the text 'OnAir Clock - InstallShield Wizard' and a close button. The window has a header section with the title 'Ready to Install the Program' and the instruction 'The wizard is ready to begin installation.' Below this, a larger text area says 'Click Install to begin the installation.' and 'If you want to review or change any of your installation settings, click Back. Click Cancel to exit the wizard.' At the bottom left, the 'InstallShield' logo is visible. At the bottom right, there are three buttons: '< Back', 'Install', and 'Cancel'.

Wait until installation is complete



Click on "Finish" button to end installation, now connect the Hardware Key (Dongle) to your PC.



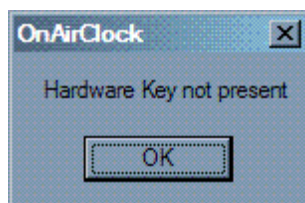


## 4 RUNNING THE SOFTWARE

Launch OnAir Clock from the Desktop Icon.



If the following error appears, please check if the Hardware Key (Dongle) is correctly plugged in.

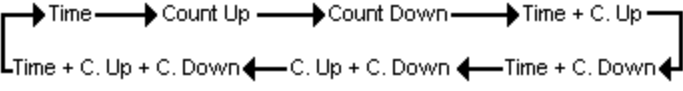
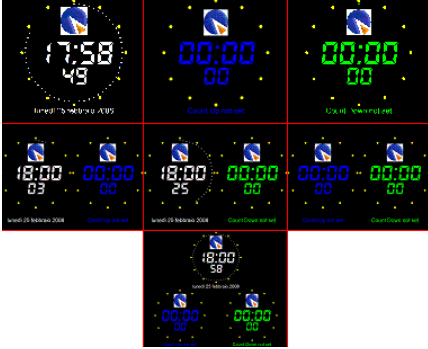
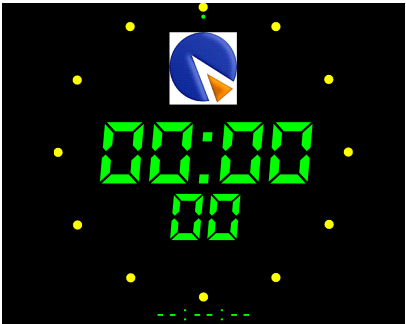

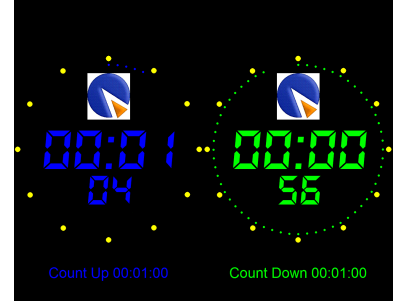
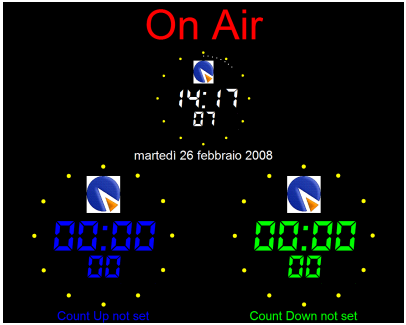


You can use the software without an Hardware Key (Dongle) only for about 10 minutes, then the program will close.

Every time you start the clock you will see the Local Time Clock

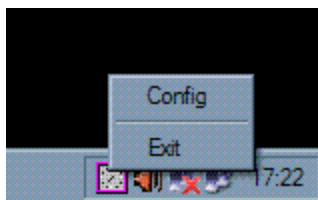


From the main screen you can change the default clock, set the count Up and Count down and show default messages by pressing the numeric pad keys, as described in the following table:

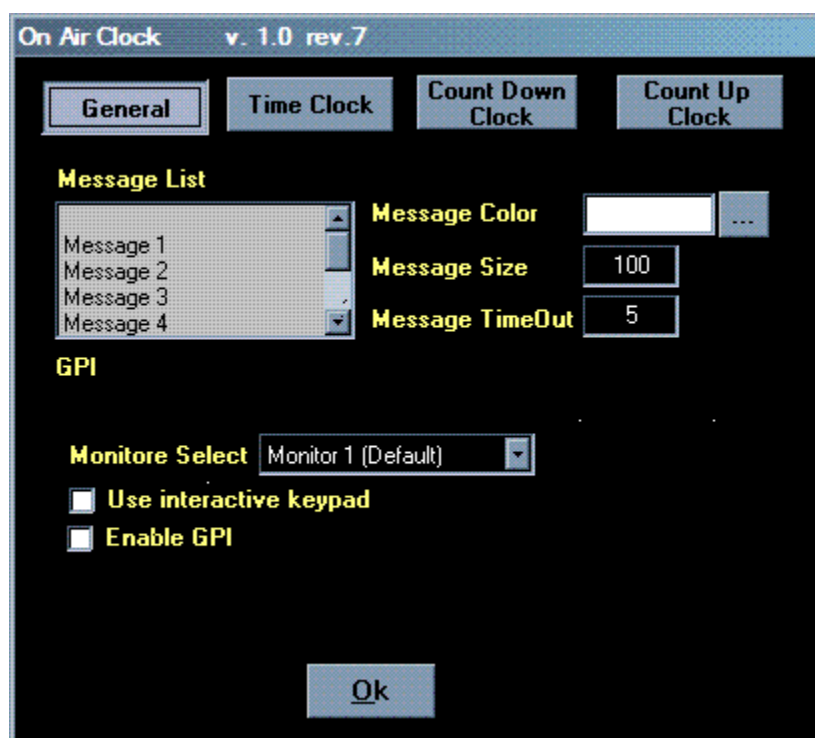
<p>*</p>	<p>Switch through available clocks</p> 	
<p>-</p>	<p>Set Count Down Time</p>	
<p>+</p>	<p>Set Count Up Time</p>	
<p>,</p>	<p>Start / Pause Count Up / Count Down (it depends on which one is set)</p>	
<p>/ num ber</p>	<p>Show Message from 1 to 9</p>	

## 5 PROGRAM SETUP

You can access the setting panel of the OnAir Clock by right-clicking on the icon in the system tray and selecting "Config"



The Setting Panel will open



### General Setting Panel options

**Message List:** In this box you can set up to nine messages that appears when you press the "/" key and the message number key (from 1 to 9). Select the line of the message you want to customize and double click on it

**Message Color:** Choose the text color of the message

**Message Size:** Set the text size of the message

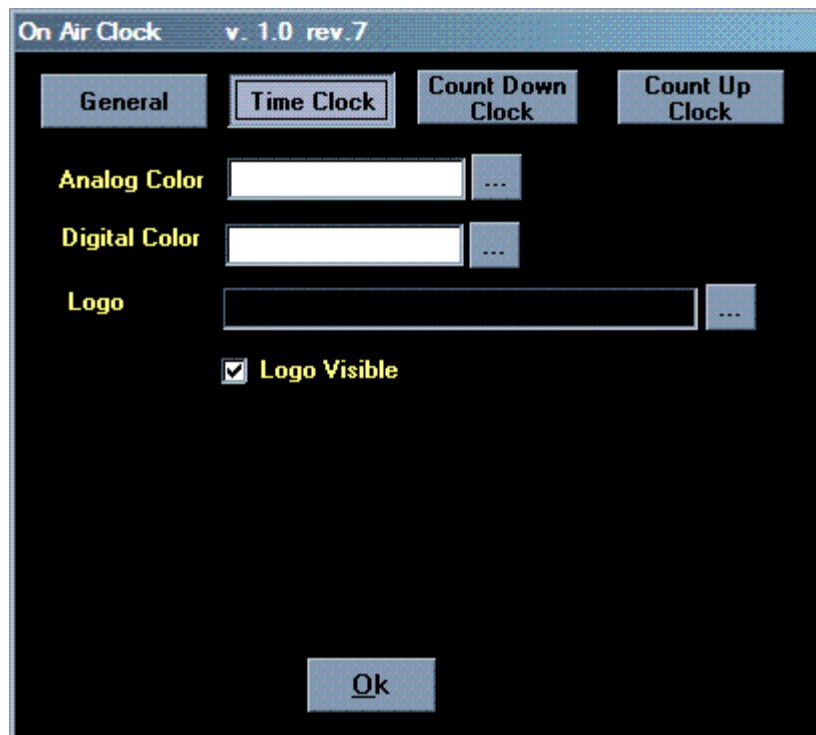
**Message TimeOut:** Set for how long the message will be displayed

**GPI:** If a message is selected, you can select which GPI pin will be activated when the message is displayed.

**Monitor Select:** Select the monitor where to display the clock

**Use interactive keypad:** If this option is checked, pressing the key buttons on another window will interact with the clock.

**Enable GPI:** Enable the GPI interface



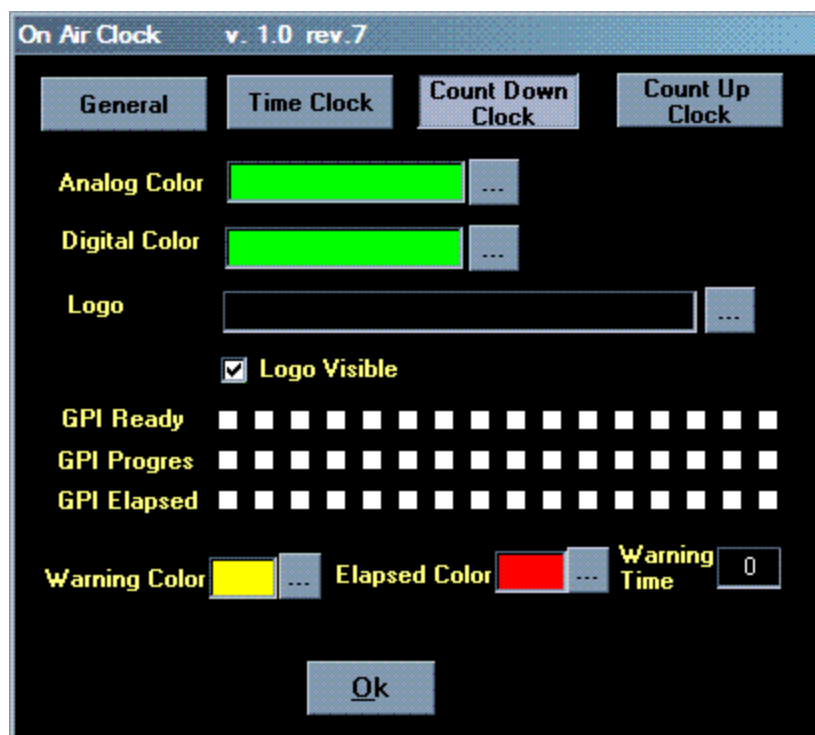
## Time Clock options

**Analog Color:** Set the Dot Color of the Clock

**Digital Color:** Set the Number and Date Color of the Clock

**Logo:** Select a picture to be displayed above the Digital clock (the picture will resize automatically)

**Logo Visible:** Select whether to display the logo or not



## Count Down Clock options

**Analog Color:** Set the Dot Color of the Clock

**Digital Color:** Set the Number and Date Color of the Clock

**Logo:** Select a picture to be displayed above the Digital clock (the picture will resize automatically)

**Logo Visible:** Select whether to display the logo or not

**GPI Ready:** Set which GPI Pin will be activated when the Count Down is ready to start

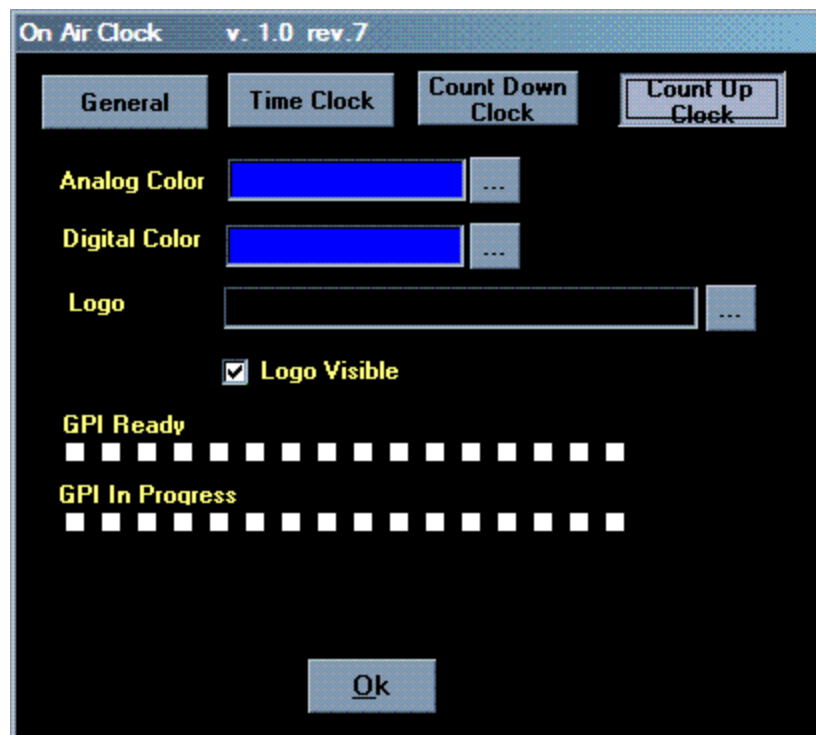
**GPI Progress:** Set which GPI Pin will be activated when the Count Down is in progress

**GPI Elapsed:** Set which GPI Pin will be activated when the Count Down is expired

**Warning Color:** Set the clock color for the last "Warning Time" seconds

**Elapsed Color:** Set the clock color when the count down is expired

**Warning Time:** Set the seconds to the end for the warning signal



## Count Up Clock options

**Analog Color:** Set the Dot Color of the Clock

**Digital Color:** Set the Number and Date Color of the Clock

**Logo:** Select a picture to be displayed above the Digital clock (the picture will resize automatically)

**Logo Visible:** Select whether to display the logo or not

**GPI Ready:** Set which GPI Pin will be activated when the Count Down is ready to start

**GPI In Progress:** Set which GPI Pin will be activated when the Count Down is in progress

## **6 WARRANTY**

AXEL TECHNOLOGY offers a 1 year ex works warranty.

AXEL TECHNOLOGY S.R.L. shall not be liable for damage of any kind deriving from or in relation to incorrect use of the product.